

THE YORKSHIRE MOUNTAINEER

Issue: 385

Summer 2021



IN THIS ISSUE

Crookrise & Embsay

Black Hill

Cam Fell & Dodd Fell

Great Shunner Fell & Lovely Seat

Margary Hill & Ladybower

Tony Crosby

The Yorkshire Mountaineering Club - Founded 1941



Contents

- Welcome from the Editor
- Committee Matters
- Meet Reports
- More from Memory Lane
- More Meet Reports
- Tony Crosby
- Meets calendar

Cover photos:

Front: The Old Man of Stoer

Rear: Loch Duich

Both from my collection



From the Editor.

So, Meets are taking place again and we're beginning to get back to some form of normality, which is great news.

Also, it's a pleasure for me to be able to compile a Newsletter that includes a good number of Meet Reports, so thanks to all contributors who have sent in reports and, keep them coming, they are the life blood of the Newsletter.

I've had a query regarding the size of typeface that I use. The Newsletter needs to comprise a number of pages divisible by 4, i.e. 4, 8, 12, etc. for printing purposes. I sometimes have to manipulate the font size to achieve this. Previously I've used an 11pt font, but sometimes gone smaller. On reflection I realise that for the printed copy, which is produced half size to minimise printing costs, this is a bit small, so this edition is in 12pt. Let me know what you think.

Deadline for input to the next Newsletter, TYM386, is 14th December 2021.

As always, material for the next newsletter can be sent to me at:

newsletter@theymc.org.uk

or

ymcnewsletter@gmail.com

But now for an apology! I probably don't check these addresses as often as I should, however, I do check them prior to preparing the Newsletter. For some reason a whole bunch of e-mails going back to January have appeared at the .org address that I haven't seen before. Fortunately, there was nothing overly important but if you've been feeling neglected for not getting a reply from me then please accept my apologies.

Please use my personal e-mail for urgent correspondence.

Steve Bostock

Committee Matters

By the time the next newsletter is circulated, members will have received their Membership Renewal Forms so it is appropriate that the recent review of rates is conveyed here. During the pandemic/lockdown, reduced rates were applied. However, since these restrictions are no longer in operation, these rates will no longer apply. There have been only minimal changes to the cost of re-joining in 2022 and the new rates are listed below:-

Family membership £50 (up from £49)

Single/single parent family £28 (no change)

Student/junior £8 (no change)

Aspirant members joining after 30th June will receive a discounted rate of £30 (Family) and £18 (Single/single parent family).

Four new Aspirant members have been added to the Membership Register and we welcome them to the Club:-

Gary Colley, Luke Reece, Luke Ryan and Joanne Fulton.

The Coniston hut has been open since April 19th and so is generating revenue again but is unlikely to reach the levels of previous years in 2021. However, Covid-19 Small Business grants have been received again, in excess of £17,000 during the year. Profitability would not have been possible otherwise. In addition, further Discretionary rate relief has been applied for from South Lakeland District Council, who have acknowledged receipt and will be processed in due course.

Changes in the Environment Agency's regulations in relation to septic tanks have meant that the Club has had to apply for a discharge permit. The decision as to whether the tank's operating complies to the required standards is expected in around thirteen weeks.

The Committee are in the process of reviewing the Club Rules since this was last undertaken in 2006 when the Club was acknowledged as a New Society. It is planned to undertake a review every twelve months in order to keep them up to date.

The Gritstone Guide Volume 1 has sold out and a reprint of a further 2000 copies has been completed. These are now available for purchase.

The Club has been heavily involved in the production of the Northern Rock Wired Guide, a collaborative effort between several northern based clubs with production costs being funded by the YMC. Ultimately the cost and profit apportionment is based on the number of pages each club contributes. The YMC share is expected to be around 65%.

Publication is expected to be early 2022.

Communications to the whole Club is served by Mailchimp, but it has its limitations. However, it is a free version which only allows one user because of two factor authentication.

This has been proving restrictive so an alternative is being sought. A couple of suggestions have been made but more research is being undertaken before a decision is made.

Walking meets re-commenced on May 17th and reports are that generally they have been well attended, particularly Crookrise, Black Hill (Peak District) and Sutton Bank in mid July. The first hut meet for some time takes place in Wales at the end of September and there is the possibility that all 20 places will be taken.

The Photo Competition, due to be held on October 14th, was put in doubt because of the possible lack of entries due to Covid restrictions. Holding a photo show in its place was considered a possibility and members would be informed of developments.

URGENT APPEAL

In issue 384 of TYM it was mistakenly stated that Dave and Audrey Girt had agreed to continue their role as Membership Co-ordinators for another year due to the difficulties posed in the transfer of responsibilities (to a successor) by the Covid-19 restrictions.

Since these restrictions are no longer in force, we have been advised that this is no longer the case and they do not intend to be in charge when the membership renewal process begins in November.

This is a vital position that needs to be filled in order to ensure the effective functioning of the Club.

If any member feels that they are able to help by taking the role or would like more information on what undertaking the position would involve, please contact the Secretary at ymcsec2016@gmail.com

The Committee

A couple of notes from our Treasurer

Members are reminded that out of pocket expenses will only be paid when the expenditure has been approved, in advance, by the Committee and is supported by receipts that clearly show what the expenses are for. An exception to this rule is for travel expenses using your own vehicle, when payment will be based on the mileage, economy of your vehicle and the price of the fuel used.

The Club has recently been informed by HSBC that charges for depositing cash and cheques and issuing cheques are to be introduced. To minimise the cost to the Club of these new charges the Club requests that payments to the Club be made by bank transfer, wherever possible.

The Club's Bank details are: Sort code 40-33-19

Account number 01504614

Crookrise Crag and Embsay Moor - 6th June 2021

At last! A glimmer of hope – the first meet for many months and 19 attendees – great stuff. The initial climb up to the trig point was hard work for legs unused to going uphill. After drinks, the traverse into Waterfall Gill was taken and shortly after we reached the main bridleway, where more refreshment was consumed.

The two shooting huts were the venue for lunch after which we crossed the summit of the bridleway at 435m and descended to Hutchen Gill Hut for more refreshment. We took the indistinct path to Eastby Gate and descended the Heugh Gill path to Eastby and back to Embsay, where more liquid refreshment was required after a very hot day.

Attendees

Natasha, Amy & Kate Cook; Rachel Caruthers; Nabeela Hafiz; Rukhsana Azim; Jane Wainwright; Laurie Morse; Tony Raithby; Becky Burrill; Rob Dracup; Yvonne & Steve Bartlett; Kath & Graham Willis; Shafiq Shah; Bill Cordingley; and Me.

Derek Field

Black Hill Meet - 13th June 2021

This was just the second Meet in 2021 and a reasonable turn out considering the Meet was located on the county boundary of West Yorkshire & Derbyshire, but perhaps more impressive given the Meet was competing with England's first Euro 2020 match. The route has been two years in the making and was originally proposed in 2019 by Peter & Jennifer as their first Meet to lead for the Club.



No issues with parking this morning in the South Car Park, Digley Reservoir. The group set off promptly to pick up the Kirklees Way leading us through Holme village, skirting the reservoirs and slowly rising up to join the top of Ramsden Clough. We followed the edge along a series of cloughs before taking Lightens Edge towards Holme Moss. We stopped to refuel and enjoy the views above Yateholme reservoir before we crossed the barren moorland to Black Hill by a less popular route. The Pennine Way took us down to Issues Clough where we cut over to Blackpool bridge to make the final rise up to Nether Lane, leading us back to the Car Park via Bilberry reservoir.



Out for 5 hours, covering 18.5km with 500m ascent. The group kept up a good pace and everyone enjoyed the views in this green corner of West Yorkshire.

Attendees: Peter & Jennifer Tennant, Tony Raithby, Becky Burrill, Rob Dracup, Ben Gilbert, Yvonne Bartlett, Steve Bartlett, Kath Willis, Graham Willis, Shafiq Shah (Guest).

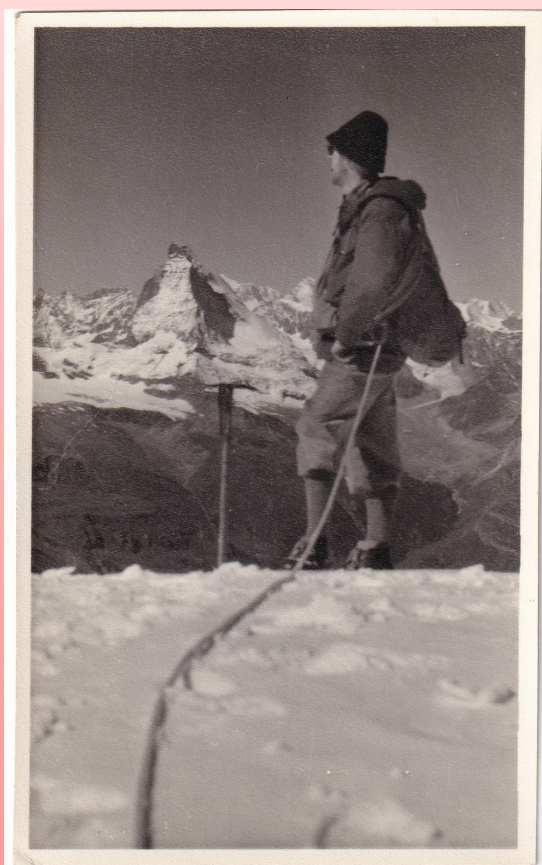
Photos: Peter Tennant, Shafiq Shah

Peter & Jennifer Tennant

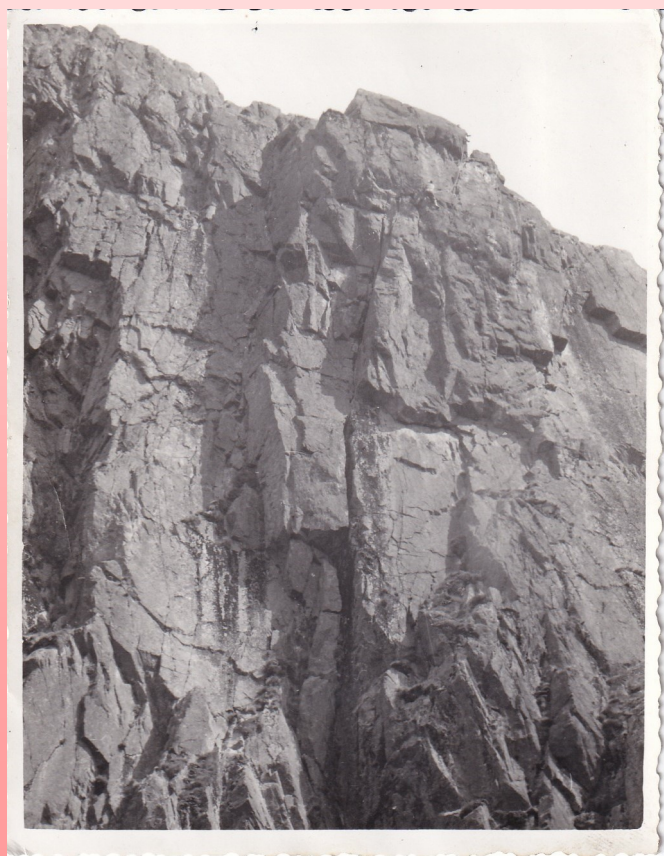


More from Memory Lane

Here's some more old piccies courtesy of Sol.



1958 Zermatt - Looking to the Matterhorn from the summit of the Rimpfishorn.



1959 Gimmer Crag Langdale - Sol on the crux pitch of Kipling Groove.



1961 Dolomites - Pete, Derrick, Fred, Sol, George and Jack on the summit of Cima Grande.

Cam Fell & Dodd Fell

Date: Sunday 20th June 2021

Start Point: Long Slack Gate, Oughtershaw Road, GR: SE 859 837

Attendees: Kath and Graham Willis

On arriving at the start point we found ourselves in splendid isolation apart from the cars that ventured up or down Oughtershaw Road and it soon became apparent that this was going to be a party of 2. As the first few walks after lockdown restrictions were lifted had attracted several members, aspirants and guests we were a little surprised but not disheartened by the lack of attendees. To be fair it is a long drive for most people and the weather forecast had been for heavy showers all day and the fact that it was Father's Day could have all been contributing factors. However we decided to drive up to the layby on Cam High Road and walk from there.

Taking the Cam High Road we continued past Kidhow Gate and Cold Keld Gate along the Pennine Way Path onto the highest point on Cam Fell. Although it was cloudy there was no rain and very few walkers. As we retraced our steps we encountered a couple who said they were in search of a piece of rock that they had discarded the week before that contained fossilised crinoids. However it appeared that their luck was out as they returned empty handed to their car at Kidhow Gate where we were having lunch.

Continuing north along the Pennine Way several 4x4 vehicles passed us churning up the dust from the dry lane. But shortly after this we headed out across the open western flank of Dodd Fell and onto the summit trig point at 668m. At this point the sun came out, making a mockery of the terrible weather forecast and we had splendid views of all the southern and western fells.



Following paths and sheep-trods for most of the return journey, we eventually found a gap in the wall to take us back onto the Cam High Road at North Gate then back to the car.

Calling at The George at Hubberholme, we decided to sit outside in the covered yard where we enjoyed a refreshing pint whilst watching a blackbird feeding her chicks that were nesting in the hanging flower baskets on the pub wall.

Kath Willis

Great Shunner Fell & Lovely Seat

Date: Sunday 25th July 2021

Start Point: Roadside Parking, west of Hardraw – GR SD 866 911

Attendees: Richard and Sam Binks, Bill Cordingley, (guests). Rachel Carruthers (aspirant member), Tony Raithby, Ken Tilford and Kath & Graham Willis (members).

Once again we were blessed with good weather and although there were several cars and camper vans parked along the road at the start point, we all managed to squeeze into the last available spaces. Setting off at 10am we followed the Pennine Way from Hardraw village. It was slow going uphill, climbing steeply to Hearne Top, where we took a break so that we could all regroup. From here it was easier walking up to Black Hill Moss, Bleak Haw and Hearne Edge. It was a warm day but there was a good breeze and plenty of cloud cover in between spells of sunshine so the walking conditions were excellent.

It was agreed that we should take lunch at the trig point on Great Shunner Fell summit, but most of our party decided against sitting in the wind shelter as there was a wasps nest somewhere among the stones and other unusual flying insects. Another couple caught us up just before we were about to leave and another walker had just left the summit as we arrived. Surprisingly these were the only people we encountered on the tops all day!



Leaving the other couple to fight off the wasps, we headed east following the boundary fence around Little Shunner Fell, passing a stone beacon on our right. To avoid losing too much height we crossed a low section of the fence to cross Grimy Gutter and fought our way across uneven ground to a track that led us to the Butter Tubs Pass at Bull Bogs. Here we encountered a large group of cyclists who were taking refreshments from a support vehicle. Needless to say we were not offered a much desired cuppa!



With our next top looming above us, we crossed the cattle grid and followed the fence steeply up the moor to the summit of Lovely Seat. Here we had a short rest, for a bite to eat and to take some photos as well as looking back on the clearly marked route we had taken up Great Shunner Fell.

The route down over Lovely Seat End was certainly 'off piste' with tussocky grass and (thankfully) dried up bogs; not a route I would suggest taking during wet weather! However once we had descended to the beacons above Pike Hill, we found a track which led us down to Sowry Head where we re-joined the road. Walking downhill, we took a right turn just before Simonstone Hall, through a farm yard and across fields back down to Hardraw. An interesting feature at the top of the last field was an elaborately carved bench which had been erected in memory of a young man.

Well-earned refreshments were taken outside at The Green Dragon pub at Hardraw.

The total distance travelled was approximately 16.8k (10.5m) & 611m (2,004ft) of ascent.

Kath Willis

Margery Hill & Ladybower Reservoir

Date: Sunday 22th August 2021

Start Point: Fairholmes Visitors Centre Car Park, Bamford, Hope Valley - GR SE 009538

Attendees: Eve & Steve Bartlett, Ben Gilbert and Kath & Graham Willis (members).



Having done a recce for this walk last month, when the carpark was almost full, we were a little surprised how quiet it was when we arrived. However I'm sure the weather forecast was the main culprit and with the threat of rain showers all day, we set off down the minor road without raincoats despite a light drizzle in the air. At this point it was welcome as the day was warm and humid, but we were sure that conditions would deteriorate throughout the day – and of course they did!

When the impressive dam wall came into view, we left the road and took the track leading to the stone steps which ascended steeply to the path at the eastern side of Derwent Reservoir. With shelter from the trees we followed the path to Howden Dam where we were hit by a short shower and a brief stop to put on our raincoats. However by the time we had walked a short distance along Howden Reservoir, the sun came out and the coats came off.

This is a very popular walk and bike ride with families especially in the summer months, as we found on our last visit when we encountered hordes of people having picnics and bathing by the bridge at Slipper Stones. Today it was almost deserted except for a few mountain bikers who headed over the bridge to presumably return along the western side of the reservoirs.

It was here that we followed the Cut Gate path, which climbed steeply up onto Howden Moor and we passed a lone mountain biker who was heading our way (but also on foot). Shortly after passing some disused quarries the ground levelled out, so we stopped for a breather and enjoyed the spectacular views with the purple heather in full bloom, and the masts on Black Hill and Emley Moor in the distance. A kilometre later we arrived at Cut Gate End where we stopped for lunch by the cairn, but another sharp shower had us once again diving into our rucksacks for our coats. This again this was short lived and coats were back in our bags as we set off across Howden Edge, where the trig point of Margery Hill came into view on our left. From here we continued along Wilfrey Edge to High Stones (marked by a small pile of stones)



Continuing along Howden Edge we followed the path which descended steeply to a stile at Row Top and from here a wide track took us over Nether Hey towards New Close Wood. We had been watching big black clouds in the distance all day and managed to get away with light showers, but a heavier one caught us as we arrived at the edge of the wood. Some of us decided the waterproofs were needed yet again and whilst sheltering under a tree, a rucksack started to roll down the steep grassy slope. One of the party rushed after it, trying to hold onto a branch to give stability, but as that snapped, forward momentum took them down quickly and still holding the branch in one hand the rucksack was rugby tackled into submission with the other. Fortunately there were no injuries and so we continued through the wood to reach the track below Howden Dam.

From here we walked under the shade of the trees back to the carpark just as the heavens opened and this time it was more than just a shower. Some of us drove to The Strines Inn for refreshments

The total distance travelled was approximately 18k (11.3m) & 615m (2,017ft) of ascent.

Kath Willis

In memory of Tony Crosby



It is sad to report the passing of another Club member, Tony Crosby, who died on August 1st after a long illness. He would have been 78 this month.

Our paths first crossed in April 2014 at Castleton in the Peak District, where we had arranged to meet to discuss him taking over the role of Newsletter Editor. Over the course of time I found him to have lots of enthusiasm and energy and was always good company.

Tony first joined the Club in 1999 but it was not until May 1st 2014 he took on the role of Editor.

He displayed great vigour and initiative, modernising the format as well as going outside the Club to find material, including interviews with some of the leading climbers of the day. A full obituary is planned for TYM 386.

Pete Stott

Forthcoming Meets

All Saturday and Sunday Meets start at 10.00am prompt unless otherwise stated.

Please contact the Meet Coordinator if you intend to join a Meet or require further information.

Please check www.theymc.com for confirmation of start point details.

Meet Co-ordinators' personal email addresses and phone numbers can be obtained from the website membership list or contact the Meets Secretary.

- Oct 10th Scugdale & Wainstones. NY Moors.
Roadside Parking TBC
Henry Beevers.
- Oct 24th Castleton. Peak District.
Castleton village car park. S33 8WN – GR SK 149 830 or road side parking
Kath & Graham Willis.
- Nov 5th Coniston Hut – Club Bonfire Meet. (2 nights).
Booking - ymchut@gmail.com
- Nov 21st Pateley Bridge. Nidderdale. Yorks Dales.
Town centre car parking.
Eve & Steve Bartlett.
- Dec 12th Xmas Fuddle Walk - Barden Moor, Skipton. Yorks Dales.
Barden Scale. Approx Postcode BD23 6AP- Roadside parking - GR SE 051 568.
Derek Field.
- Dec 24th Xmas /New Year Coniston Hut Club Meet (11 nights).
Booking - ymchut@gmail.com
- Dec 26th Ilkley Cow & Calf – Traditional Boxing Day Meet.
Cow & Calf Public Car Park. Approx post code LS29 9RF – GR SE 130 467
Derek Field
Meet Time – 10:30am.

Evening Meets

These are also back up and running although time is running out for climbing in the great outdoors.

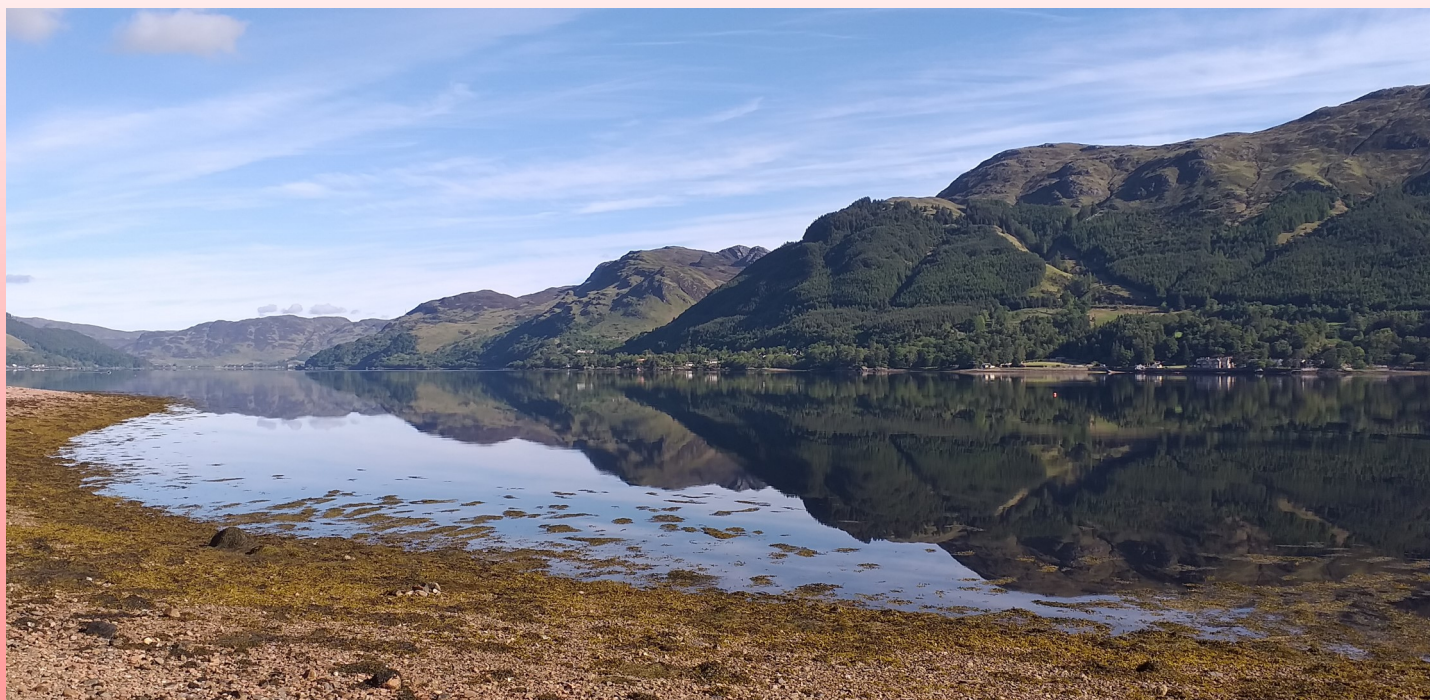
Contact Rob Dracup for details as there is currently no fixed programme.



The Yorkshire Mountaineering Club - Founded 1941

And finally.....

If there's anything more that you think the club should be doing please let the committee know: by speaking to a committee member or email the club Secretary - ymcsec2016@gmail.com



*Save your club money and
get the newsletter delivered
straight to your inbox.
Email us to get you added
to the mailing lists
newsletter@theymc.org.uk*

Issue: 385

Summer 2021

The Yorkshire Mountaineering Club - Founded 1941